

2010-2011 INAUGURAL YEAR



NEO
ENSEMBLE
THEATRE

ANNUAL REPORT

A collaborative and diverse company of artists committed to educating and inspiring the community through the celebration of humor within the human condition.

It's official. June 30, 2011 marked the end of the first fiscal year of Neo Ensemble Theatre.

As our inaugural year comes to a close, we have much to celebrate!

This official Annual Report will outline the details of this year, as well as plans for the future. Please take the time to see what Neo Ensemble Theatre has accomplished, as well as what we plan for the future. Your involvement is essential. As we embark on our second year, we look forward to continuing to build a happy, healthy company.

2010-2011 MEMBERSHIP

After months of changes and fine-tuning, we ended the year with the following talented members:

Will Ahrens
Greg Albanese
Rachel Anderson
Ara Anton
Mitra Avani
Rebecca Brooks
Ellen Brunot
Ava Burton
Michael Caldwell
Arilyn Carpenter
Loren Chadima
Maria Cominis
Lila Dupree
Lauree Enos
Michael Erger
Becca Flinn
Dee Freeman
James Geraldin
Joan Giammarco

Carol Goans
Marcy Goldman
Mary-Pat Green
Jim Grollman
Aimee Guichard
Jennifer Haft
Marykate Harris
Kelly Hawthorne
Carol Herman
Janet Hoskins
Amy Judd
Laura Julian
Bruce Katzman
Dagney Kerr
Matt Kirkwood
James Knudsen
Di Koob
Christine Krench
Gretchen Krull
Helen Lambros

Monica Lawson
Mark Harvey Levine
Jay Levy
David Lewison
Camille Licate
Charlene Lovings
Jessica Mathews
John McCormick
Stuart McLean
Jane McPherson
Howard S. Miller
Michael Miranda
Anna Quirino Miranda
Eric Mofford
Beth Nintzel
Rebecca O'Brien
Joe Ochman
Mark John Packer
Steven Palmer
Marina Gonzales Palmier

Cassadie Petersen
Alexandra Raines
Michael Earl Reed
Rita Renee
Jacquelyn Riggs
Tracey Rooney
Sheila Sawhny
Dorothy Sinclair
Donaco Smyth
Al Spencer
David St. James
Jesse Sharp
Damon Standifer
Lynn Stevenson
Jerel Taylor
Ralph Tropic
Bob Wilson
Rachel Winfree
Wendy Worthington



We'd like to pay tribute to two talented and beloved members of Neo that have passed away. Critt Davis and Carol Ketay will forever live on in our hearts and through the lives we touch with our art.



2010-2011 ACCOMPLISHMENTS

We came out of the gate like gangbusters. This past year we:

- Secured our Federal nonprofit status as a 501c (3)
- Secured our first grant
- Became a community leader as a voice for senior citizens
- Launched with the incredibly successful, star-studded *ONE VOICE*
- Mounted two casts of *FREE* at the John Ansen Ford Theatre
- Established a musical component to the company
- Welcomed two powerful groups of new members
- Reduced membership to committed, eager participants
- Established new leadership
- Created a financial reporting system
- Created a dues management system
- Secured a second grant with *Patron Manager*, a software based management system
- Secured a corporate sponsor with Barefoot Wine for the run at the Ford
- Secured sponsorships with Freeman and One Day Signs to create signage
- Secured ongoing sponsorship with Sally Ann Catering
- Resurrected the monologue nights
- Hosted workshops for company members
- Continued with monthly readings at the Burbank Senior Artists Colony
- Introduced the Burbank Senior Artist Company to an independent filmmaker who used the facility and its residents in a film
- Had a hand in seeing that the Motion Picture Nursing Home continues to provide a place for its residents within the hospital wing.
- Created a one-year, three- year and five- year plan

LEADERSHIP

James Geraldin stepped in as Board President to lead the charge. We owe him a huge debt of gratitude for not giving up the dream.

The original Neo Ensemble Leadership included:

James Geraldin, President Damon Standifer, Treasurer Marcy Goldman, Secretary
Board Members: Michael Erger, Gerri Graham, Laura Julian, Christine Krench, Charlene Lovings, Michael Merton, David St. James,
Donaco Smyth, Wendy Worthington. Derek Wood aided the transition by helping to set up the website and secure email capabilities.

As the decision was made to move forward, new roles were defined. The year concluded with the following leadership.

Arilyn Carpenter came on board as Executive Director. Wendy Worthington and David St James took on roles as Artistic Directors in charge of Production and Membership (Michael Erger got the ball rolling as an Artistic Director in charge of Financial Development)

James Geraldin, President John McCormick, Treasurer Marcy Goldman, Secretary
Board Members: Michael Erger, Laura Julian, Christine Krench, Charlene Lovings

After proving himself as a master at development, John McCormick has joined the ranks as an Artistic Director. John has a natural talent for fundraising and is very passionate about the company. He will be a fantastic leader. Christine Krench has stepped down to produce a bigger project – her first child. Christine carried a huge role in the production at the Ford. Not only did she design and create the marketing materials, she also acted as the choreographer and assistant director while taking a huge role in group sales and box office duties.

Our new 2011-2012 leadership is as follows:

Artistic Director focused on Production – Wendy Worthington Artistic Director focused on Development – John McCormick
Artistic Director focused on Membership – David St. James Executive Director – Arilyn Carpenter

David St. James has also stepped in as Board President. This is not an unusual model for nonprofits.

Marcy Goldman will continue her fine work as our secretary. Gretchen Krull has stepped into the Treasurer's role

Laura Julian, Charlene Lovings and Michael Miranda are committed, passionate board members.

Former board members still involved are:

Donaco Smyth – offering expertise as a PR Director

Michael Erger – Maintaining a role in the play-reading/writing group – he also continues to offer his expertise in helping to shape the financial health of the organization.

Many company members volunteer their time to support the company in non-board positions. Eventually we will have paid positions. We encourage people to become involved now as a means to create a solid base for the future. Some of the current active members include:

Lynn Stevenson – Website Mitra Avansi – Play-reading Coordinator Mark Levine – NET News Guy
Jerel Taylor – Social Media Jennifer Haft – Volunteer Tracking Carol Goans - Wrangler
Will Ahrens – Dramaturg Tracey Rooney – Monologue Festivals Ralph Tropf- Grant Coordinator

FINANCIAL

While the current financial picture of Neo Ensemble Theatre is far from optimal, the company can pride itself on two astounding factors:

1) We have no debt. Many theatre companies operate with a large overhead and are in debt.

2) The company has managed to sustain itself on ticket sales and membership dues alone. This demonstrates a devoted patron base and membership loyalty.

This budget is the fiscal year in review. Although Neo Ensemble Theatre does not operate on a large budget, the company maintains a philanthropic nature and sincerely supports senior citizens. This year the company raised money to help the struggling advocates from Saving the Lives of Our Own in their valiant effort to stop the closing of the Motion Picture Home's Senior Care Center. We were successful in that fight and garnered many valuable contacts as we move forward.

While raising money on a show-to-show basis has worked, in order to present an entire season, the company will continue to fundraise with raffles and events such as Neo EnsemBOWL. We are also in the process of soliciting major sponsors and grants to offset some of these expenses.

B		D
Account Description		July 11 - July 12
		Actual
	Income	
1	Fundraising/Raffles	\$1,670
2	Fundraising/Special Events	\$351
3	Ticket Sales	\$16,394
4	Concessions	\$806
5	Membership Dues	\$9,458
6	Program Ads	\$200
7	Donations	\$3,086
8	Misc	\$219
9	Total Income	\$32,184
	Expense	
10	Stipends - Contracted Actors	\$2,016
11	Stipends - Contracted Designers	\$4,427
12	Stipend - Contracted Support	\$1,950
13	Professional/Contract Service Fees	\$2,863
14	Production Supplies & Costs	\$918
15	Operating Costs	\$800
16	Theatre Rental	\$8,910
17	Staff Development/Meetings	\$775
18	Equipment Costs	\$2,509
19	IRS Nonprofit Fee	\$850
20	Insurance	\$1,100
21	Donations	\$2,143
22	Marketing	\$2,206
23	Concession Supplies	\$277
24	Rehearsal Space	\$75
25	Fundraising Supplies	\$205
26	Printing/Mailing	\$1,076
27	Total Expense	\$33,100
28	Reserves	\$0
29	Net Income	(\$916)

2010-2011 PRODUCTIONS

We have had many organizational and structural successes during our first year. But the real point is the art. And we continue to grow in this arena as well. For the first time in our history, we hired a set designer for **FREE**. This is a huge step forward. We would like to see our production values continue to grow from this point forward. We opened and launched our company with **ONE VOICE: AN EVENING OF MONOLOGUES AND MEMORIES**. This one- night performance surpassed our wildest dreams. It was a star-studded, standing- room- only event. And not only did it shoot us to the top of the “google” list (now entering ‘Neo Ensemble Theatre’ takes you directly to us) but it helped insure the continuation of the Motion Picture Home’s hospital wing.

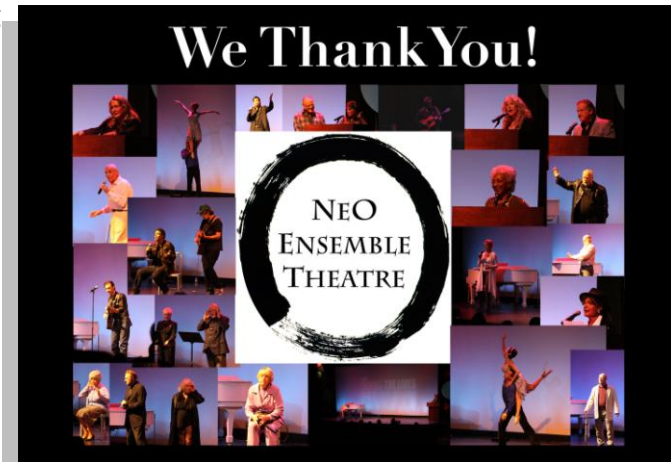
Not to be undone, we sped forward with mounting **FREE** at the John Ansen Ford Theatre. This also helped us secure a spot in Hollywood. The rebirth of this company is well documented. And it didn’t cost us anything for this press! We established incredible relationships and learned what we need to do to keep this company fresh and exciting. And we produced a wonderfully quirky play written by a former Rewrights member and were able to utilize two casts.

We also continued with our long tradition of MONOLOGUE FESTVALS adding some new members to the “Best of the Best” ranks!

ONE VOICE



Neo Ensemble Theatre’s inaugural event, "**One Voice**," launched with a packed house inside the Renberg Theatre. It was simply an amazing success! Celebrities turned out in droves, including **RICHARD DREYFUSS, JOHN SCHNEIDER, GLORIA LORING, ESAI MORALES, DAWN WELLS, JERRY DOUGLAS, CONNIE STEVENS, RENÉE TAYLOR, JOSEPH BOLOGNA, STEPHANIE POWERS, ANTHONY MICHAEL HALL** and many more! On stage, **MICHAEL EARL REID, DAVID ST. JAMES, CAROL HERMAN** and two-time Emmy Award Winner **KATHRYN JOOSTEN** represented N.E.T. with superior performances that brought down the house. The evening was skillfully directed by **JOHN McCORMICK** and produced by **JOHN McCORMICK, RALPH TROPF** and **DOROTHY SINCLAIR**. Sponsors included **BOTTLEROCK WINE, FREEMAN COMPANY** and **SALLY ANN CATERING**.

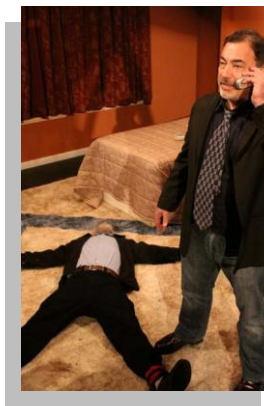
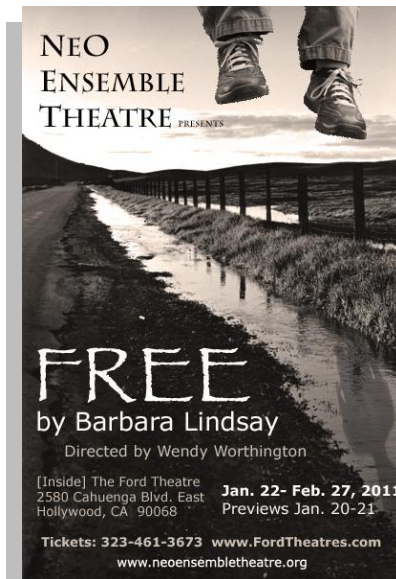


FREE

The **West Coast premiere** of ***FREE*** by **BARBARA LINDSAY**, directed by **WENDY WORTHINGTON** opened at [**Inside**] **the Ford** on January 22 and ran through Feb 21st. **GREG ALBANESE, MICHAEL EARL REID, DAGNEY KERR, JANE McPHERSON** and **DONACO SMYTH** starred. Understudies **ARA ANTON, REBECCA BROOKS, ARILYN CARPENTER, JIM GROLLMAN** and **MICHAEL MIRANDA** performed on Sunday evenings.

Set design for ***FREE*** was by **KURT BOETCHER**; lighting design was by **TIM SWISS**; sound design was by **JANET HOSKINS**; costume design was by **TINA ZARRO** original music was by **DAVID J. CARPENTER**; choreography was by **CHRISTINE KRENCH** who also assistant directed; production stage manager was **ELLEN L. BRUNOT**.

FREE was the second production in the 2010-11 Season at [**Inside**] the Ford, a three-play, curated series of new works from three L.A.-based theater companies that is supported by the Los Angeles County Arts Commission and the Ford Theatre Foundation, with funding from the National Endowment for the Arts.



MONOLOGUE NIGHTS

We have reestablished our monologue nights. Artistic Director **WENDY WORTHINGTON** describes the purpose of these evenings :

“There’s a very good reason why I do every Neo Monologue Festival. Several, really. They all come down to the fact that I am serious about making my living as an actor. The Monologue Festivals are an important reason why I have a career in the first place and why I continue to work. They are a cost-effective (and tax-deductible) way of reaching or reminding at least two (more often three, and sometimes more) casting professionals that I am part of the casting pool. They allow me to perform material that shows them the kind of role I do especially well, in a piece I have rehearsed and polished, as part of an evening of really good work. Tracey Rooney books great casting directors and assistants (who are just as valuable to me, if not more so), and I know there will always be legitimate people there to see me. They may include people who already know my work well. They may also include people who typically cast things I’m not right for but sometimes need my type. They may be last-minute additions to the lineup (in fact, I can be sure they will be, because life in a casting office isn’t suited to planning ahead). They may include people who aren’t working on anything right now (which may be why they have the time to attend). I don’t care. The casting community is small, and they talk to each other. The more of them who know me, the more likely they are to think of me for the right role. I’ve been called in **TWO YEARS** later, more than once. Monologue Festivals are the single most important reason I am a member of this company. They are the reason I have a career in the first place and the reason I continue to work.”

Wendy Worthington, Artistic Director and Actor Extraordinaire



MUSICAL COMPONENT

To help garner audiences at the Ford Theatre, we enlisted the help of **DAVID J. CARPENTER**. He scored **FREE** and provided musical acts to perform between shows on Sundays. These acts included artists such as **DJ BONEBREAK (X)** and Jill Sobule. The musical component of **SHAKESPEARE’S FOOL** also made its debut at the Ford. Since then, this unique musical experience has become part of Neo Ensemble Theatre. Aside from producing plays, Neo Ensemble Theater now has a musical component.

SHAKESPEARE’S FOOL features company member **AVA BURTON** performing Shakespearean monologues that are interspersed with new music written by **JASON FEDDY** to Shakespeare’s lyrics. The result is a delightful evening that is taking off like wildfire. Having musical acts that are collaborating with N.E.T. while performing at local clubs is a way to keep Neo’s name out in the public while allowing the bands to perform under the company’s nonprofit umbrella. By performing as a nonprofit, Neo and **SHAKESPEARE’S FOOL** are able to reach a wide audience. This particular project is not only fun but educational, and it fits well into our mission of educating and inspiring the community through the celebration of humor within the human condition.



BRANDO’S PANTS, a band made up of Neo members, is also part of the new musical component of the company.

Collaboration is the key to a successful nonprofit company. It allows us to reach more people and create more art. We are very excited to produce additional ways to stimulate the arts in Los Angeles.

2011-2012 CALENDAR AT A GLANCE

July – 2011

10 Neo EnsemBowl
25 Board/Staff Meeting
31 Auditions – *Surprises*
Play Reading

August - 2011

6 Company Meeting/Auditions
15 Producer's Meeting
16 Play Reading
29 Monologue Night

September – 2011

Board Meeting
16 *Surprises* Opens
Play Reading
Monologue Night

October – 2011

Company Retreat
9 Closing Night *Surprises*
Monologue Night
Play Reading

November – 2011

Company/Board Meetings
Play Reading

December – 2011

Company/Board Meeting
Monologue Night

January - 2012

Company/Board Meetings
Mainstage Production
Play Reading

February – 2012

Company/Board Meetings
Monologue Night
Play Reading

March – 2012

Hiatus

April – 2012

Company/Board Meetings
Ford Application Due
Monologue Night
Mainstage Production
Play Reading

May – 2012

Company/Board Meetings
Staff Retreat
Play Reading

June – 2012

Company/Board Meetings
Monologue Night
Annual Dinner
Play Reading
Mainstage Production

2010-2011 GOALS

As many of you are aware, we were not awarded the Ford grant this year. This is actually a good thing. We have a wonderful relationship with the Ford Theatre. The Executive Director of the Los Angeles Arts Commission, Adam Davis, has been an incredible mentor and is looking forward to seeing how we grow and change. We already have plans to submit next year, as well as a work in progress that will allow us to submit a project that can include ALL of our members, either live or on film, for a production in the main amphitheatre. We also have plans to refocus our art, strengthen our mission and rebuild the business of the company to prevent burn-out and continue in a professional and exciting manner.

We are in the process of establishing criteria and a system for play selections. We would like to present opportunities for Neo playwrights as well as entice playwrights to join our company. Once the criteria are firmly established, we will post it on the website. We are opening our 2011-2012 season with “*SURPRISES*” written by **MARK LEVINE** at The Grove Center Theatre from September 16th through Oct 9th.

The remaining season will soon be announced. We will have a company retreat in October. Join us. As a member, patron, donor, supporter and/or fan, this is your chance to be heard as we continue grass roots efforts to create a company that is a collaborative and diverse company of artists committed to educating and inspiring the community through the celebration of humor within the human condition.

2011-2012 is a time for continued restructuring and growth. Some of our goals include:

- Raising the quality of art and continuing to grow production values
- Operating with a seasonal intent – rather than show- to-show
- Creating a patron management system to garner season subscribers
- Shift current board members into staff positions and create a new board of community members whose primary focus will be fundraising and creating policy
- Operate from a yearly budget rather than show-to show
- Implement a sustaining membership of patrons to support operations as means to reduce and eventually eliminate membership dues
- Secure three financial grants to subsidize productions and operations
- Establish criteria for play selections and procuring new works
- Establish a community of designers and below-the-line talent to support productions
- Establish criteria for the “Red Cross Society” to pay tribute to former Geo & Neo members who have “given blood” to this company
- Solidify plans for a permanent space
- Establish relationship within the community to secure major donors

See you in October at the Company Retreat! Help us build our dream and make an impact in the community!!

2010-2011 PROJECTED BUDGET

	July 10-June 11	Account Description	July 11 - July 12		
	Actual		Budget	Actual	Variance
		Income			
1	\$1,670	Fundraising/Raffles	\$4,000		
2	\$351	Fundraising/Special Events	\$5,000		
3	\$16,394	Ticket Sales	\$20,000		
4	\$806	Concessions	\$2,000		
5	\$9,458	Membership Dues	\$9,000		
6	\$200	Program Ads	\$3,000		
7	\$3,086	Donations	\$2,000		
8	\$219	Misc	n/a		
9	n/a	Sponsorships	\$10,000		
10	n/a	Grants	\$10,000		
11	\$32,184	Total Income	\$65,000		
		Expense			
12	\$2,016	Stipends - Contracted Actors	\$10,000		
13	\$4,427	Stipends - Contracted Designers	\$7,000		
14	\$1,950	Stipend - Contracted Support	\$2,000		
15	\$2,863	Professional & Other Contract Service Fees	\$3,000		
16	\$918	Production Supplies & Costs	\$2,000		
17	\$800	Operating Costs	\$1,000		
18	\$8,910	Theatre Rental	\$20,000		
19	\$775	Staff Development/Meetings	\$1,700		
20	\$2,509	Equipment Costs	\$3,000		
21	\$850	IRS Nonprofit Fee	\$200		
22	\$1,100	Insurance	\$1,100		
23	\$2,143	Donations	\$2,000		
24	\$2,206	Marketing	\$2,500		
25	\$277	Concession Supplies	\$1,000		
26	\$75	Rehearsal Space	\$500		
27	\$205	Fundraising Supplies	\$1,000		
28	\$1,076	Printing/Mailing	\$2,000		
29	\$33,100	Total Expense	\$60,000		
30	\$0	Reserves	\$5,000		
31	(\$916)	Net Income	\$0		

DONORS

Neo Ensemble Theatre would like to thank the following contributors for their support in making our inaugural year a success. We look forward to a long and continued relationship!

Ellen Brunot
Michael Caldwell
Arilyn Carpenter
David Carpenter
Laura Julien
Christine Krench
Helen Lambros
Anne Miranda
Chanispha Riubamrung



F R E E M A N



**T
H
A
N
K
Y
O
U**



**BAREFOOT
WINE & BUBBLY**

